



2 MEADE COURT

WALTON ON THE HILL



www.michael-everett.co.uk

2 MEADE COURT

WALTON ON THE HILL KT20 7RN



ONE RECEPTION ROOM



REFITTED KITCHEN



2 BEDROOMS



EN SUITE SHOWER ROOM AND BATHROOM

APPROX. 612.67 FT² | 56.92 M²

Set in an attractive modern development built in 1993 by Berkeley Homes a very well presented 'cottage' style split level maisonette.

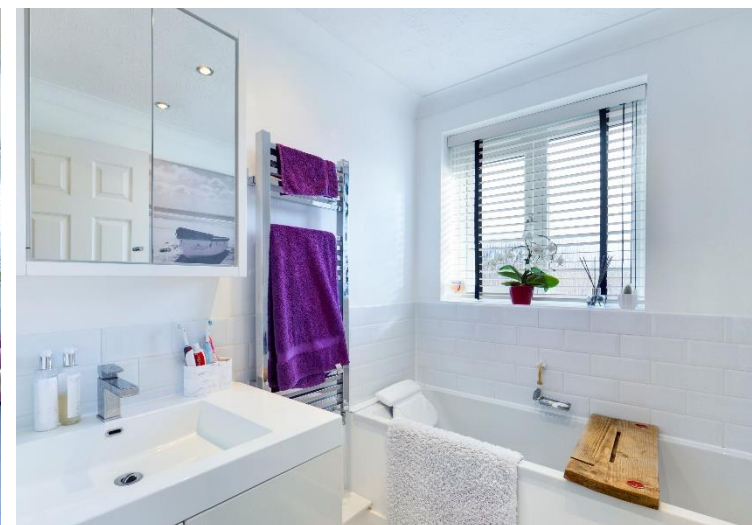
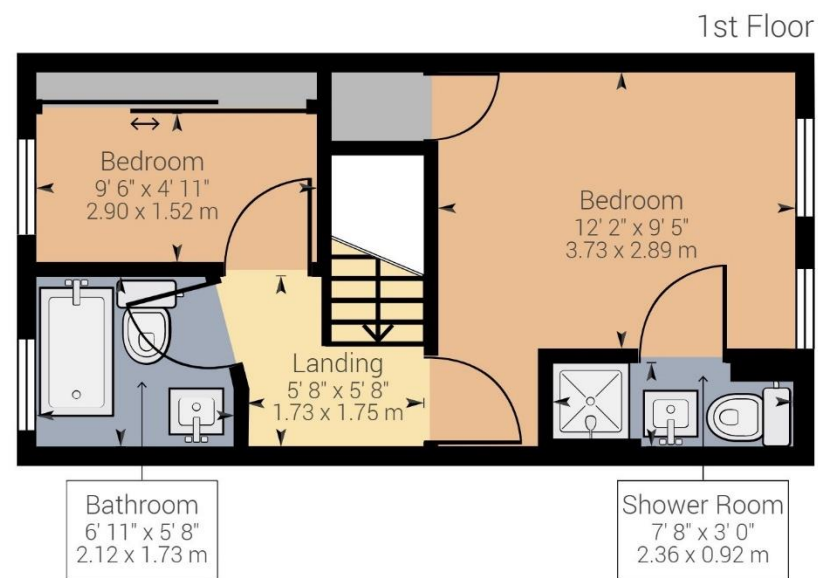
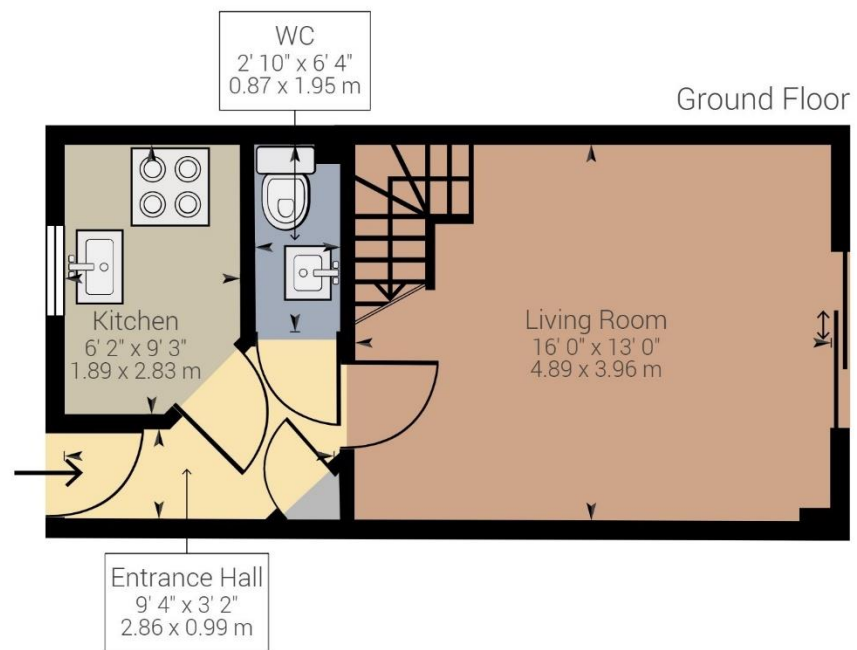
This lovely property features a private entrance with hallway, a good size living room with doors out onto a private part walled patio garden, a newly re-fitted kitchen, downstairs wc, two first floor bedrooms, and modern re-fitted en-suite shower room and bathroom.

Outside, there are areas of well maintained communal gardens with a covered private car port and visitor parking.

The property is located right in the heart of the village with easy access to the a range of shops and services, pub/restaurants, the village primary school and the picturesque Mere Pond and Church Green.

ASKING PRICE: £385,000







WALTON ON THE HILL 61 Walton Street, Walton-on-the-Hill, Surrey KT20 7RZ



IMPORTANT We would inform prospective purchasers that these sales particulars have been prepared as a general guide only. A detailed survey has not been carried out, nor the services, appliances and fittings tested. Room sizes should not be relied upon for furnishing purposes and are approximate. If floor plans are included, they are for guidance only and illustration purposes only and may not be to scale. If there are any important matters likely to affect your decision to buy, please contact us before viewing the property.

michael-everett.co.uk